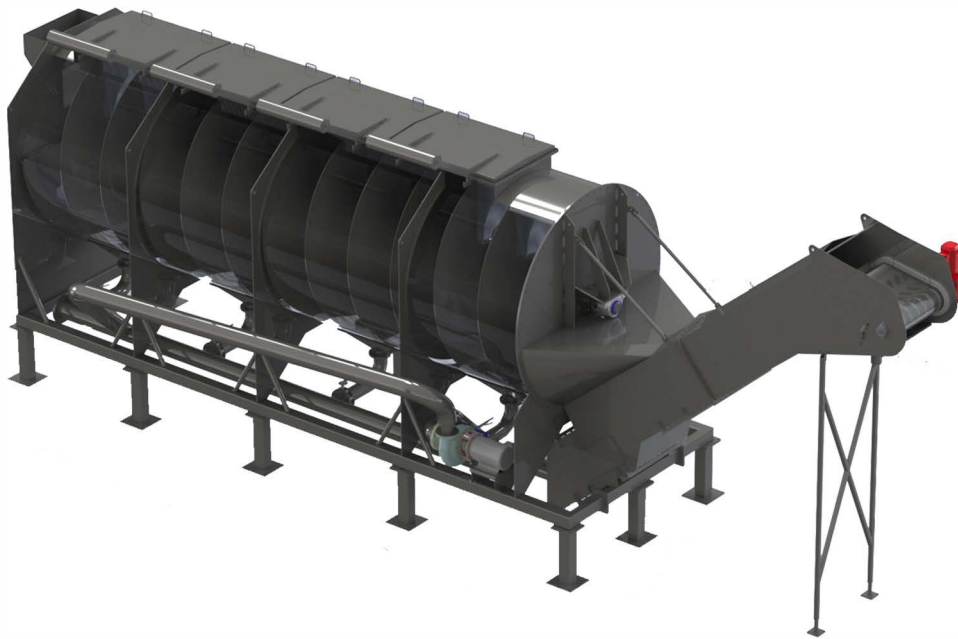


# SFW CHILLER/BLANCHER /PREHEATER



Office:(208)677.2222

[www.southernfieldwelding.com](http://www.southernfieldwelding.com)



Screw Chillers are continual flow with guaranteed product retention and variable speed throughout; this allows product to spend the appropriate time in submersion. Consistent core temperatures are attained.

## SPECIFICATIONS

Discharge Configurations include:

- Belt
- Pump
- Ferris Wheel

Size Options:

- 48"-96" diameter
- Up to 30ft in length
- All S.S. construction with circulation pump
- 48"-96" diameter
- Designed and produced for the 24/7 Industry

